

GEMINI

A cutting-edge procedure,
treatment, and surgical chair

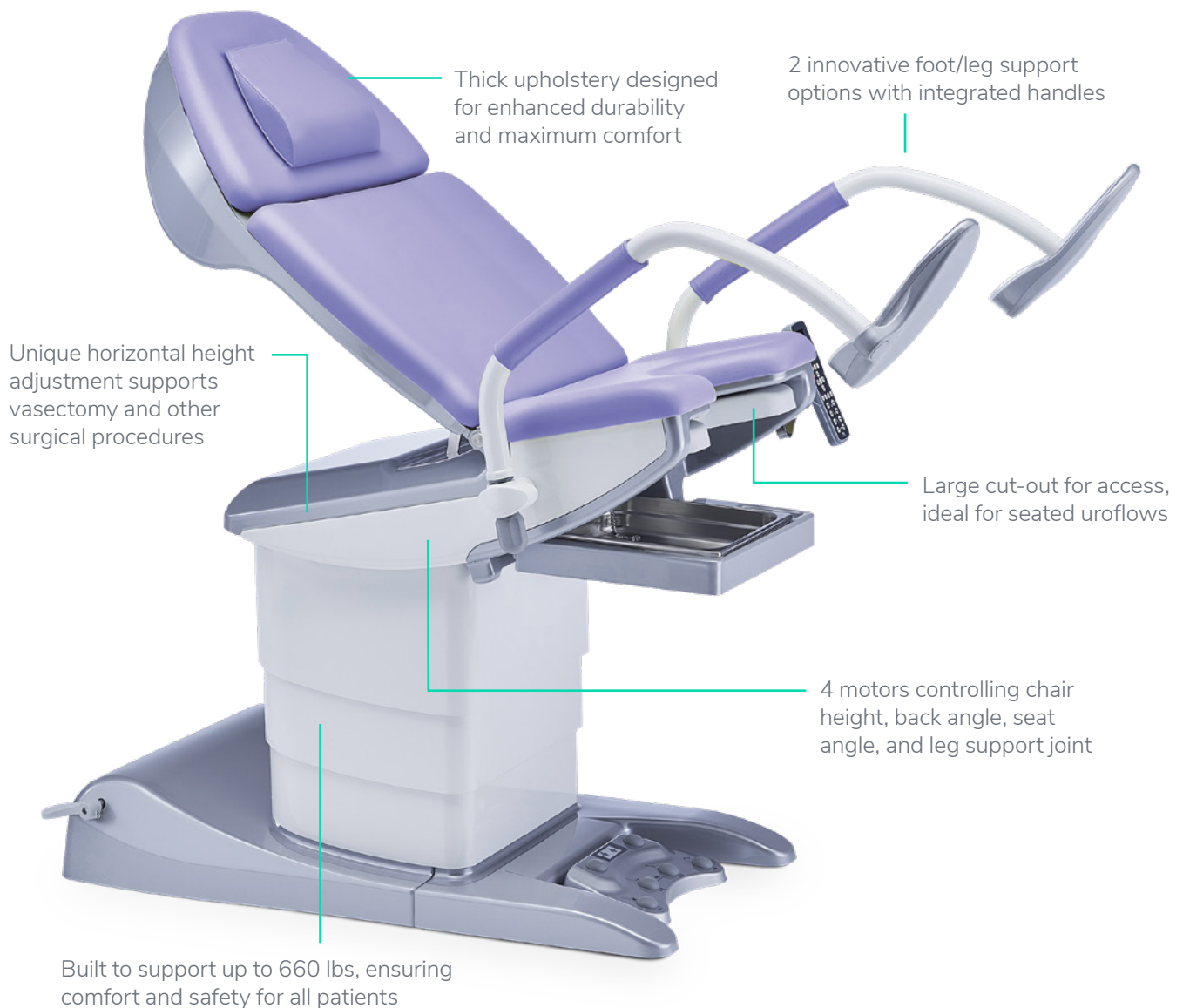
Designed for urodynamics, urology,
urogynecology, and OB/GYN practices



Built with new technology and award-winning design

medi-matic®

An advanced all-in-one chair built for accessibility and a wide variety of procedures and surgeries



✓ Easily adjustable

✓ Functional

✓ Ergonomic comfort

✓ Strong and safe

Accessible initial position

Low starting height of 18 ½" allows patients to get on safely and easily without a mounting step.



Meets ADA surgical standards

Doubles as a chair for outpatient surgeries such as transurethral resection of the prostate and vasectomy.



Comfortable sitting position

The unique 68° angle for the back provides patients with optimal comfort while sitting upright.



Memory positions

Change between 16 positions automatically with the foot pedals or hand remote with graphic display.



Customize the chair for the needs of your practice

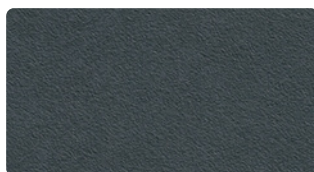
Select your color:



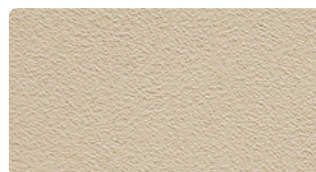
CARIBBEAN BLUE



STONE GREY



TITAN GREY



SAND BEIGE

Select leg supports:



FOOT SUPPORT AND ARM REST



LEG SUPPORTS, GÖPEL TYPE, WITH INTEGRATED HANDLE

Optional Uroflow funnel holder

Add an attachment with a clamp mechanism to align a funnel with the cutout of the chair for easy uroflowmetry.

GEMINI

Gemini Medical Technologies LLC

Phone: +1.833.943.6464

Email: info@geminimedtech.com
geminimedtech.com

123 NW 13th Street, Suite 212 Boca Raton, FL 33432